



Libra MAX-SS 5X00

5.x GHz WiMAX Subscriber Station



Advanced WiMAX Technology

The Libra MAX-SS uses 802.16d WiMAX technology to deliver high-speed non-line-of-sight (NLOS) performance in the unlicensed 5.8 GHz range.

Optimized for outdoor environments, WiMAX offers superior range and throughput to subscribers who are not in a direct line of sight to the base station.

EION Wireless is a principal member of the WiMAX forum and as such we are committed to performing rigorous interoperability testing of our products to ensure they are compatible with the majority of WiMAX equipment.

Ordering Info

Model Name	Description	Item Number
Libra MAX-SS 5X00i16	Outdoor WiMAX Subscriber Station Integrated 16dBi Antenna 5.8 GHz	9120-0110
Libra MAX-SS 5X00i20	Outdoor WiMAX Subscriber Station Integrated 20dBi Antenna 5.8 GHz	9120-0111
Libra MAX-SS 5X00i24	Outdoor WiMAX Subscriber Station Integrated 24dBi Antenna 5.8 GHz	9120-0112
Libra MAX-SS 5X00e	Outdoor WiMAX Subscriber Station External Antenna 5.8 GHz	9120-0113

Features

- Full spectrum of subscriber unit products for outdoor installation for residential and enterprise applications

Standards Based

- Adheres to the IEEE 802.16-2004 standard
- Based on the NP7256Wavesat chipset

Future Proof

- Remote upgrade and software management

Low Cost Design

- Low cost Today
- Aggressive cost reductions passed on to the customer
- Backed by a one year warranty

Ease of Installation

- Designed for customer installation
- Signal Strength LEDs enable simple installation and acquisition of optimum signal.

Libra MAX-SS is part of the award winning Libra MAX Product family

Libra MAX Base Station Products

Libra MAX-LT: All-in-one Outdoor Base Station

Libra MAX-RBS: Dual Antenna Rapid Backhaul System

Libra MAX Subscriber Station Products

Libra MAX-SP: Outdoor SS with WiFi Hotspot

Libra MAX-SS: Outdoor WiMAX Subscriber Station



320 March Road, Suite 500, Ottawa, ON, K2K 2E3, Canada
Phone: +1 (613) 271-4400, Fax: +1 (613) 271-7040
www.eionwireless.com



Specifications – Libra MAX-SS 5X00

5.x GHz WiMAX Subscriber Station

Radio

Standard

IEEE 802.16-2004

PHY Profile

256FFT OFDM (BPSK, QPSK, 16-QAM, 64-QAM)

Frequency*

5.725 to 5.875 GHz

Duplex Scheme

TDD

Tx Power

+20 dBm

Channel Size

10 MHz

Rx Sensitivity (10E-6 BER)

10 MHz

BPSK 1/2	-88.5
QPSK 1/2	-85.5
QPSK 3/4	-83.0
16-QAM 1/2	-80.0
16-QAM 3/4	-76.5
64-QAM 2/3	-72.5
64-QAM 3/4	-70.5

Antenna

16dBi, 20dBi or 24dBi integrated antenna or N-type connector

Wireless Networking

Scheduling (QoS), External LED display (signal strength/power)

Networking Features

Routing Support, Bridging Mode, 10/100 Base T Interfaces, VLAN (802.1Q), TCP/IP Traffic Classification

Security

DES-CBC, AES-CCM, Data Security Password, Configuration Security, PKM Key Exchange

Management

Web-based GUI, SNMP, Telnet, SSH
Remote software upgradeable

Regulatory Compliance

CE/Industry Canada
FCC Part 15, EMC: EN 301 489
Safety: EN 60950
Radio: EN 302 502, EN 301 893,
IP67
RoHS

Physical, Electrical & Environmental

Enclosure

Weatherproof, IP67

Dimensions

Libra MAX-SS 5X00e - 264mm x 219mm x 64mm (10-3/8" x 8-5/8" x 2-1/2")
Libra MAX-SS 5X00i16 - 264mm x 219mm x 64mm (10-3/8" x 8-5/8" x 2-1/2")
Libra MAX-SS 5X00i20 - 330mm x 257mm x 64mm (13" x 10-1/8" x 2-1/2")
Libra MAX-SS 5X00i24 - 406mm x 362mm x 64mm (16" x 14-1/4" x 2-1/2")

Weight

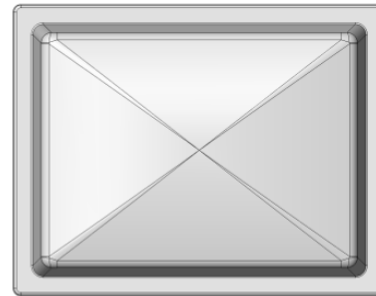
Libra MAX-SS 5X00e - 0.81kg (1.79lbs)
Libra MAX-SS 5X00i16 - 0.81kg (1.79lbs)
Libra MAX-SS 5X00i20 - 1.09kg (2.4lbs)
Libra MAX-SS 5X00i24 - 1.98kg (4.36lbs)

Operating Temperature

-40° C to +55° C

Input Voltage

18 VDC supplied via 100-240 VAC PoE



*Frequency availability is subject to country specific regulatory approval